



# The Museum Post

Web Page [www.kitimatmuseum.ca](http://www.kitimatmuseum.ca) E-Mail: [info@kitimatmuseum.ca](mailto:info@kitimatmuseum.ca)

Kitimat Museum & Archives

Monday to Friday, 10 am to 2 p.m.  
Closed Saturdays  
Closed Sundays and Holidays

293 City Centre  
Kitimat, B.C. V8C 1T6  
(250) 632-8950 (tel)  
(250) 632-7429 (fax)

## Spring 2020

### The Museum's Way Forward During This Historic Time

As many of you know, our present situation with the Covid-19 pandemic is historic. Not since the early 20th century has the world experienced such a stoppage in activities. All levels—international, national, regional, and local have been affected.

At the Museum with our closure on March 18, we cancelled Spring Break programming for March, Museum in the

Classroom Art Workshops for April, and Museum Explorer's programs for May. In all programming, funding from government and private sources was received, and so must be spent in the year. Fall and winter could see art workshops and Museum Explorer's programs offered to elementary school classes. The Spring Break cultural arts and crafts could be delivered on Saturdays. Participant numbers may be reduced in efforts to maintain the prescribed

physical distance of two metres. For Museum Explorer's programs, we may need to find creative ways to teach as our current activity stations where students gather to learn may not be prescribed.

The Museum Kids' Summer of Adventure summer programs will go ahead for 7.5 weeks, but at half the number of both participants and instructors in efforts to support the physical distancing rule. Three students will deliver the programs during July and August. All cleaning and physical observations will be followed for safety to both participants and instructors.

The Museum will open its doors soon, after painting is completed on the main floor, an acrylic barrier is installed on the main floor reception desk, and a hygiene station with hand sanitizer is set up for the visiting public. Signage will be added to the space to direct visitors, and encourage reduced touching of gift shop stock.

Open hours will also be limited to 10 a.m.—2 p.m. and closed Saturdays until further notice. Receptions and speaking engagements will be suspended for now as they are both difficult to maintain physical distancing.

Construction of the Museum lift has continued to go ahead through the entire closure. Many thanks to Zanron Construction and the District of Kitimat for continuing this much needed project guaranteed to provide improved access to the second floor. The current completion date will be sometime towards the end of June.

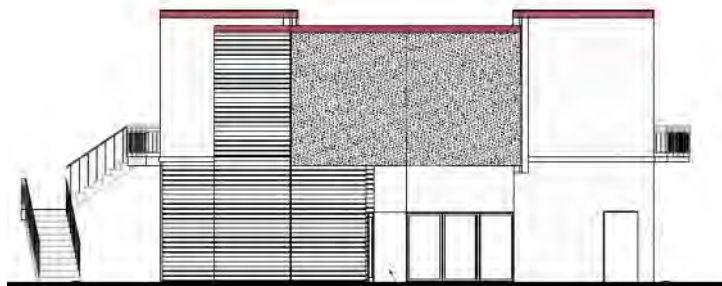
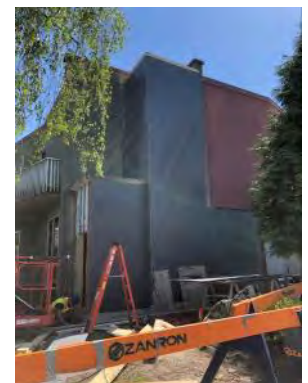
The Museum's Annual General Meeting has been delayed to either the end of June or September. If you have considered joining the Museum Board, we would like to hear from you.

**ATTENTION VISITORS**

- Do not visit if you feel unwell. Visit another time.
- Limited visitor capacity in the building.
- Hand-sanitizer station available to visitors.
- High touch areas on the premises are sanitized repeatedly throughout the day.
- Social distance - please keep at least 2 metres or 6 feet apart from others.
- Contactless payments are encouraged.

**Wolverine**  
[SOCIAL DISTANCE OVERACHEIVER]  
Wolverines don't just accept a solitary life, they embrace it with open arms. These animals are known to claim huge swaths of territory all to themselves, sometimes even putting hundreds of miles between themselves and their closest neighbor.

(left) One of a number of signs with required opening protocols, (right) the Museum building under construction, and (below) building elevation drawing, District of Kitimat.



## Recent Acquisitions

By Angela Eastman, Programming & Collections

In early 2020 X̱a'isla master carver Lyle Wilson added the following three items to his continuing donation:

- HULL-QWAY-NOACH (Orca), a 26-inch diameter water-jet cut aluminum wall sculpture.
- CHILLAKOONS GLA-GLA-QWILL-SALA, (right) a model totem pole carved in 1997. The pole was carved from an old gill net roller salvaged from the Butedale Cannery. The original pole was raised in Kitamaat in the 1870s in honour of *Sunahead* who had received the privilege from the Haida. *Tsélakuns* was the totem of Chief Gitwun of the Haida Eagle Clan of Skidegate, Haida Gwaii when peace between the Haida and X̱a'isla was established. The pole was destroyed by fire on May 13, 1955.
- KITAMAAT CLANS, an acrylic on rag mat board painting, featuring X̱a'isla clan crests.

Master Carver Lyle Wilson was born into the Beaver Clan but was adopted into his father's Eagle Clan in a move to bolster the group's diminishing numbers. The event had an immense impact on Lyle's life and inspired much of his art. In 2012, Lyle created a solo exhibition, *Paint*, a life-long exploration of X̱a'isla art, language and culture. Lyle's primary artistic influence was his uncle, Sammy Robinson. Lyle would watch the older man and copy him, whittling his own pieces. But it wasn't until Lyle attended the University of British Columbia (UBC) that he contemplated art as a potential profession. He initially focused on art education but found the studio more alluring. Eventually, Lyle left UBC to study printmaking at the Emily Carr College of Art and Design, where he developed a personal style in graphics and three-dimensional wood and jewelry compositions. Lyle was an artist-in-residence at the UBC Museum of Anthropology (MOA). His pieces are now shown in institutions in Canada and Japan.

In 2017 Lyle proposed a significant donation to the Kitimat Museum - a comprehensive cross-section of his artwork to compliment the items he has gifted over the years, and included in the X̱a'isla exhibition area. Since that time he has donated:

- SAHNIS (Supernatural Water Grizzly Bear), a sterling silver bracelet.
- THE ESCAPE (MIYA (salmon) with lure and broken fishing line), a marine ivory pendant with silver backing and bezel
- GA-UCH (Raven), a small maple paddle.
- THE PADDLER, an oak figure with a yellow cedar base. This figure was the maquette for Lyle's large red cedar sculpture commission currently on display at the BC Sports Hall of Fame.

- QOLUN (Beaver) & IKTOOKOYA (Eagle), a yellow cedar house post model.
- G'PSGOLOX GLA-GLA-QWILL-SALA, a model totem pole carved from the handle of an old-fashioned wooden dolly salvaged from Butedale Cannery.
- IKSTOOKOYA (Eagle), a yellow cedar soapberry spoon.
- BOXWOOD SPOON
- FISHING FOR MOO-GA-JEW (Halibut), a spin-cast Mexican blue glass sandblasted plate.
- SUN, a silver pendant.
- RAVEN'S LIGHT, a silver pendant and brooch.
- RAVEN, a ring carved from bone.
- GA-UCH (Raven), two ceramic bowls. Lyle carved the master copy for the cast and glazed ceramic line commissioned by the UBC Museum of Anthropology.



Museum staff will, over the next few months, document the new accessions,

create the appropriate labels, and install the artwork in the exhibit. One case now located on the main floor contains Lyle's carvings in silver, bone and wood.

This main floor case is intended to be an invitation and introduction to the X̱a'isla exhibition area on the second floor, once labelling is completed.

Production of a booklet on the collection is planned, giving context to the objects and expressing Lyle's reason for the gift - that traditional X̱a'isla culture was suppressed for over a century, leaving little to inspire younger generations.

(above) CHILLAKOONS GLA-GLA-QWILL-SALA by Lyle Wilson, 1997, and (below) *Tsélakuns* in Kitamaat, date unknown. Charles Shaw Collection. KMA No. 74.21.1



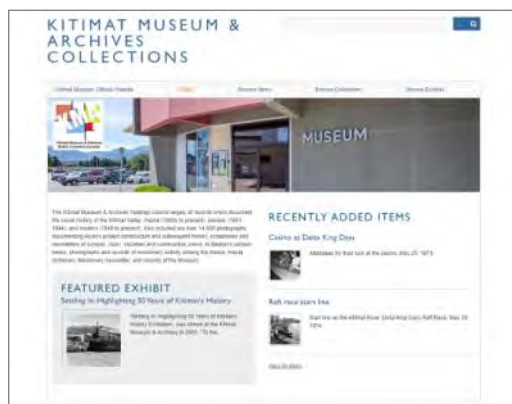
On March 18, the Kitimat Museum & Archives took precautionary measures against the COVID-19 pandemic by closing its doors to the public. While the Museum was officially closed, the behind-the-scenes work continued. Through remote access staff were able to stay home—to stay safe, and still work on services and programs that benefit our community. Work included archiving artifacts and photos, organizing finding aids, updating and maintaining databases, assessing programs for a fall offering, grant writing, and so much more!

Though working from home has meant missing familiar faces, both in the building and through programming, the payoff has been in knowing that the root work of the Museum's mandate is still being done. When the doors open once again, it can be done with confidence knowing that the Museum did not miss a beat.

## Online Exhibit

One of the exciting projects we accomplished during closure was getting photos from another past exhibition, *Settling In: Highlighting 50 Years of Kitimat's History*, online. This addition marks the third online exhibit now available for public viewing on the collections website, <http://collections.kitimatmuseum.ca>. This 2003 community exhibition asked:

*“What makes a town? What makes Kitimat unique? In the final analysis, Kitimat citizens have made the community. This exhibition attempts to show the public face of Kitimat.”*



Visit <http://collections.kitimatmuseum.ca> to find images from past exhibits hosted by the Kitimat Museum & Archives

Many of the photos have been featured in the other two online exhibits. However, in this exhibit the photos highlight Kitimat's diverse activities and administration from 1953 on. Topics include incorporation, Dominion Day, public spaces, running a town, education, commerce, religion, public service, and more.

Work has now begun preparing the next exhibit for online viewing, *Lace Up: Canada's Passion for Skating*. This travelling exhibit was produced by the Canadian Museum of History and displayed at the Museum in the fall of 2016.

## Research Requests

While closed, we have stayed in communication with the public via email and voicemail, and successfully filled a few research requests such as this one.

A descendant of the Braun Family was in touch with the Museum. The Brauns farmed in the Kitimat Valley, 1912—1939. Through a past newspaper article published in the Kitimat Northern Sentinel the relative learned of a taped interview between Walter Thorne and Christel (Chris) Braun Green over a decade ago. Christel passed away in July 2018 at the age of 93. The relative got in touch with the Sentinel, who then contacted Walter Thorne. Walter then directed the relative to the Museum where he had donated the tape. It can be a fun game of “connect the dots” at times when it comes to research.

Some time after Walter had his interview with Christel, he donated his cassette tape and transcription to the Museum. Once in communication with the Braun descendant, we were able to locate the digital interview and one more of the Braun sisters, completed in the 1980s by then curator James Tirrul-Jones. Both had been digitized from cassette to mp3 files. Copies of the interviews were sent through a file transfer program, Dropbox, to fulfill the request. It was great that all behind-the-scenes' documentation, file organization, and digitization enabled us to make this task a seamless one. It was even more of a thrill to play a part in introducing the Braun's, whose voices now remain documented through time, to their descendant.

## Information Panels

The Haisla information panels were finalized and sent off to the fabricators to print and prep. We are confident they are going to be a great asset to the Haisla exhibit and will complement the current artifacts on display, sharing a fuller picture of Haisla culture.

The anticipated completion of the Haisla panels means that we could proceed with the updating of the Delta King panels. Having the ability to access Museum network files has made great in-roads in editing revised text and image layout. Soon we will send this next set of panels to the fabricators as well.



The three updated *Delta King* panels will be hung with the same modular system as in the Haisla exhibition space. The wall itself has been remodeled as completely enclosed and repainted to coordinate with the *City of Tomorrow* standing panels for an updated, cohesive look beside the new lift.

## Upstairs Gallery



Open to local artists and photographers, of all skill levels.

### CALL FOR ENTRY

### VISUAL CONNECTIONS

Date: August 7 to September 12, 2020  
No Theme.

Create a mood with a photo, paint a landscape from your window, express a feeling with colours and textures. Share your art.

Details and entry form at:  
[www.kitimatmuseum.ca/callsforentry](http://www.kitimatmuseum.ca/callsforentry)

Entry Deadline July 24, 2020 . [www.kitimatmuseum.ca](http://www.kitimatmuseum.ca)  
Artwork must be in the Museum by August 4, 2020, for installation

### Community Art & Photography Exhibition

#### Name

*Visual Connections*, runs August 7 to Saturday, Sept. 12, 2020  
There will be no opening reception for this show.

#### Registration Deadline

Friday, July 24, 2020

#### Description

The Kitimat Museum & Archives is seeking visual artists and photographers, of all skill levels, to participate in the upcoming community exhibition, *Visual Connections*. There is no theme, though written statements are strongly encouraged to accompany the submitted pieces, in order to create an internal or external dialogue with the artist/photographer and viewers.

#### IMPORTANT DATES

- The deadline for entries is Friday, July 24, 2020
- Artwork must be in the Museum by August 4, 2020, for installation.
- Exhibition dates: August 7 to Sept. 12, 2020

Find the Entry form online at [www.kitimatmuseum.ca](http://www.kitimatmuseum.ca)

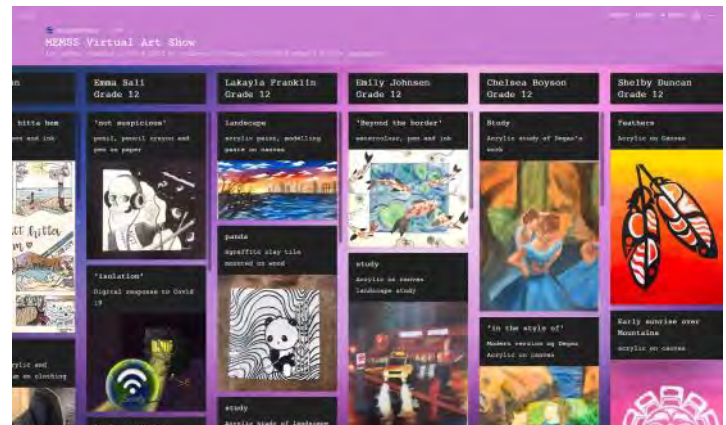
### Coming soon to the Museum's Gift Shop

#### "A Story of the Engineering of the Kemano-Kitimat Transmission Line" by Peter Catchpole

Non-fiction book, 240 pages, with over 99 photographs. Peter Catchpole writes, "I worked on this line's engineering from 1993 to the present and was mentored as an engineer by the Line's original designer. I also spent a lot of time with Adam Charneski who was the line's maintenance supervisor for 40 years after being part of its construction. My book gives insights, often first hand, into why the line is where it is and why it is made up of the things you see out there. It's a book about the impact that the line has had on the people who had the pleasure to work on it." Contact us if you are interested in purchasing a copy.

### MEMSS Insights 2020

This year, due to the COVID-19 pandemic closure of the building, we were unable to hang the annual MEMSS Insights student art exhibition. However, Ms. Atkinson has created a virtual exhibit to showcase the talents of the students. Presenting the 'MEMSS Virtual Art Show', artworks created in 2019-2020 by students at Mount Elizabeth Middle-Senior Secondary School. We would like to applaud the skills displayed by the young artists and wish them well in their creative endeavours.



View online at: [https://padlet.com/maureenatkinson/s8jvummgnc01tzkf?fbclid=IwAR3XOrmUEqMS\\_rZCwSISJm4bgUNVEODTzdiU-yKCP7fpazaVRToRogn1FgE](https://padlet.com/maureenatkinson/s8jvummgnc01tzkf?fbclid=IwAR3XOrmUEqMS_rZCwSISJm4bgUNVEODTzdiU-yKCP7fpazaVRToRogn1FgE)



This website, [cultureonline.ca](http://cultureonline.ca), enables British Columbians to search hundreds of live streams from arts and cultural organizations, resources for educators and families, and tours of award winning cultural sites from around the province.